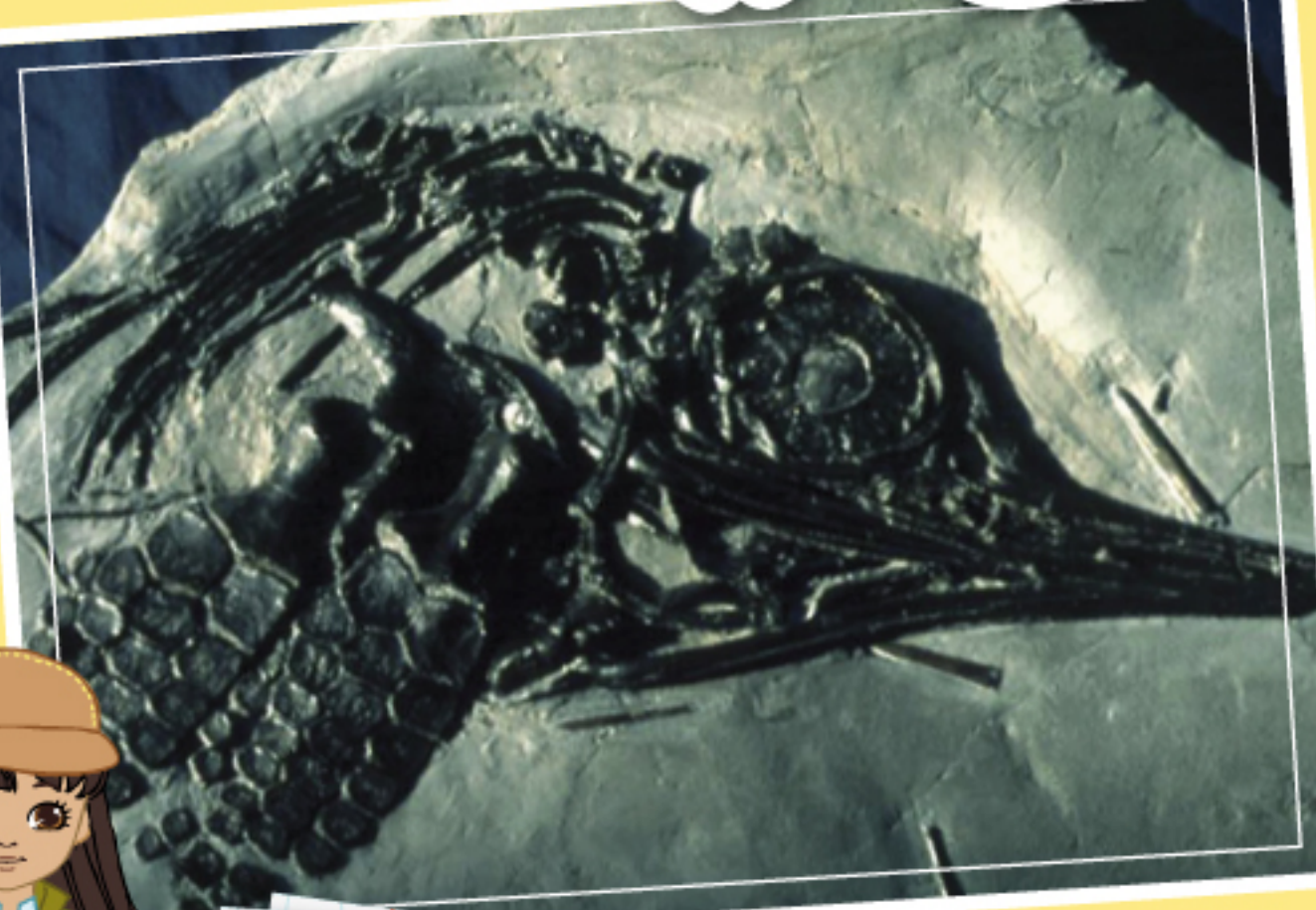


Lottie™

Super

SCIENCE



WHY HAS MY BODY TURNED INTO STONE?

By working through this puzzle, can you help Lottie to answer her question?

JURASSIC COAST Resources are
licensed under a Creative Commons
Attribution 4.0 International License.

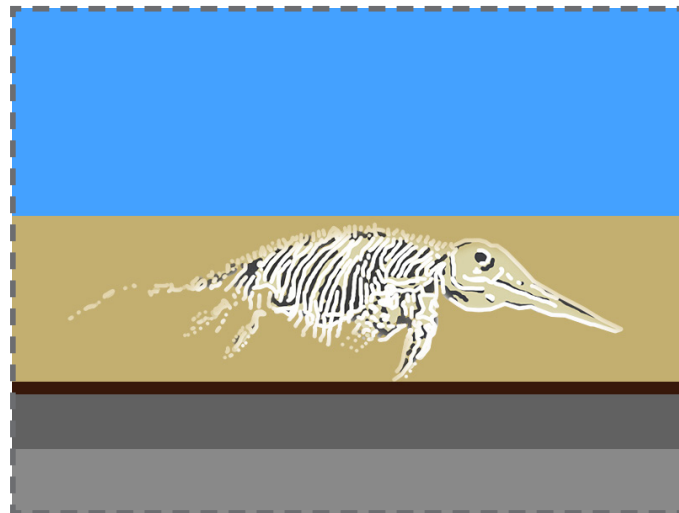
JURASSICCOAST
DORSET AND EAST DEVON
WORLD HERITAGE SITE



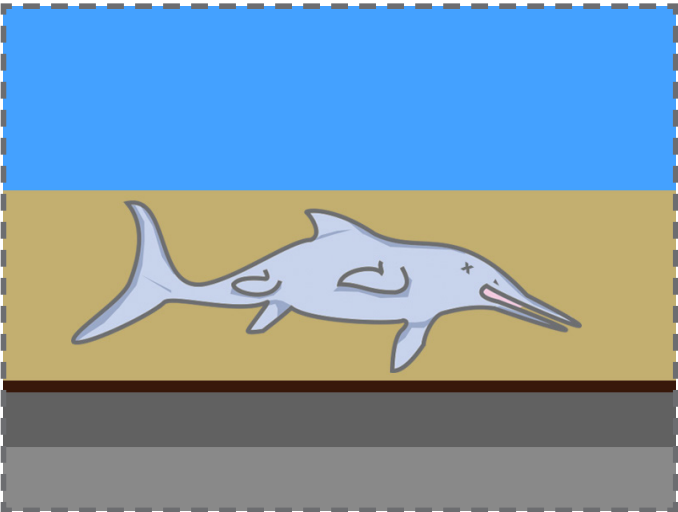
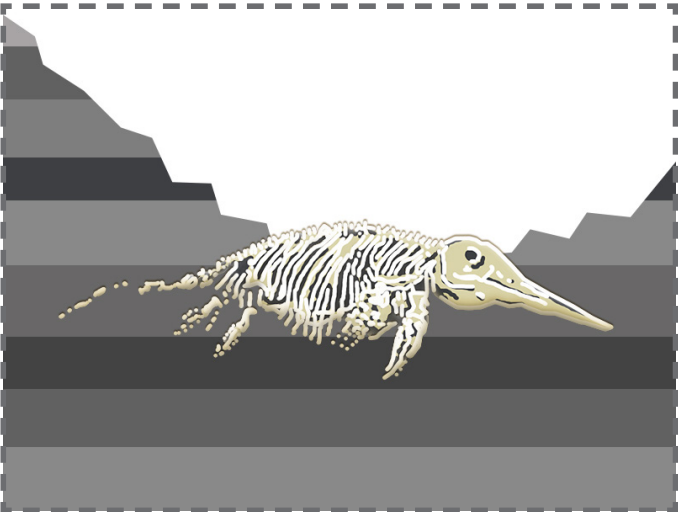
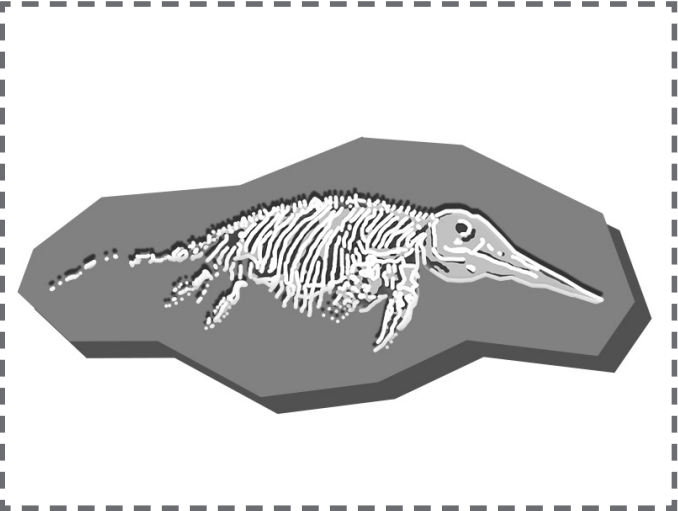
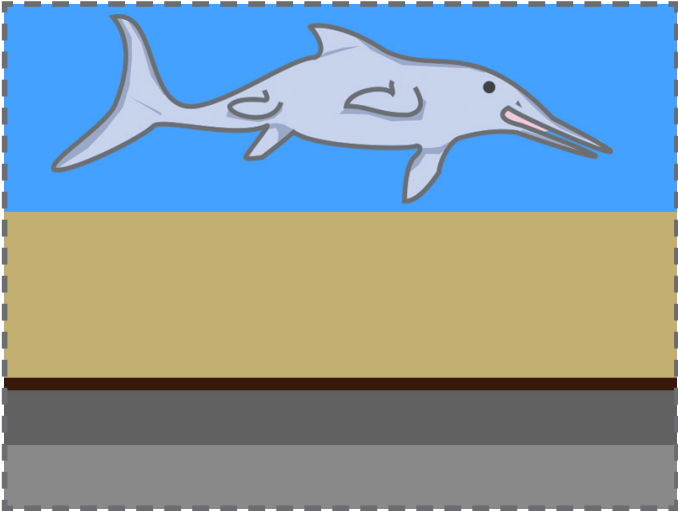
WHY HAS MY BODY TURNED INTO STONE?

Fossils are the remains or impressions of living things such as animals and plants that lived a very long time ago and became embedded in rock. But how did a living creature get turned into stone? By working through this puzzle, can you help Lottie to answer her question?

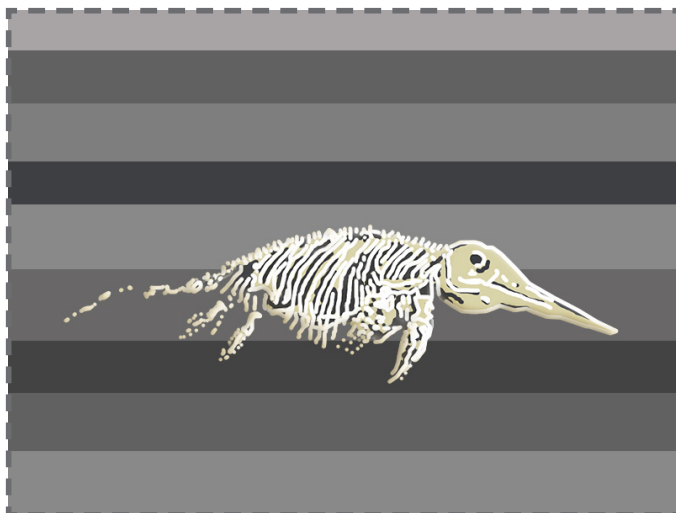
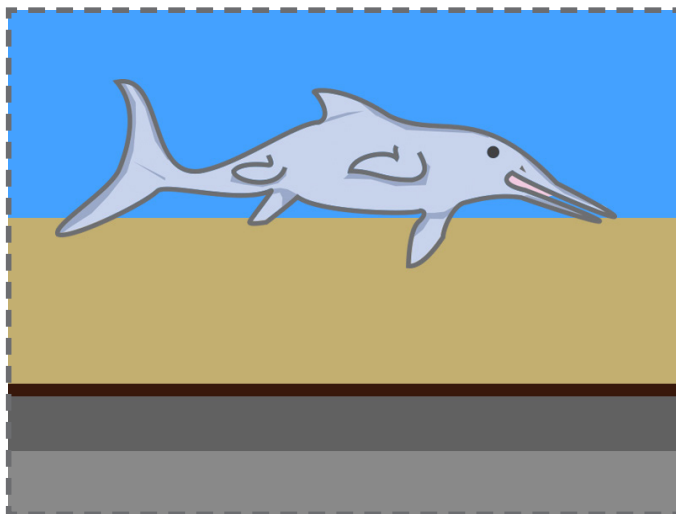
Cut out the cartoon images of Ichthyosaur becoming a fossil.
Can you put them in the right order?




WHY HAS MY BODY TURNED INTO STONE?




WHY HAS MY BODY TURNED INTO STONE?





Want more



go to
www.lottie.com/blogs/super-science



JURASSIC COAST Resources are licensed under a Creative Commons Attribution 4.0 International License.

Photo Credits

All images and text are copyright of Jurassic Coast Trust. Permission must be sought should anybody wish to extract and use any of the text and images for any other use.

