

SCIENCE AT WORK

MEET THE ENGINEERS JYOTI AND AILSA: MORE ABOUT THEIR PROJECTS

INFINITY BRIDGE, STOCKTON



The engineers had to work out how the bridge would stay up and not wobble when people walked across it. Parts of the bridge were made in factories and then assembled on site. [Click here](#) to see more pictures of the bridge, including drawings of the designs and pictures of it being built.

HS2 (HIGH SPEED 2) RAILWAY

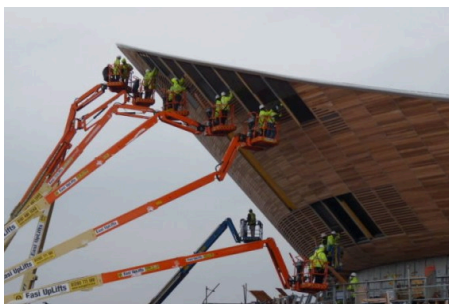
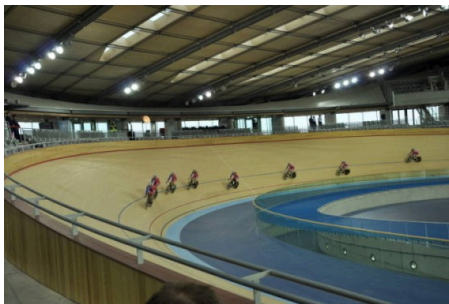


HS2 is a new high speed railway that will link 8 of Britain's biggest cities. Trains will be able to travel up to 250 miles per hour! The engineers have to make sure that their designs are sustainable and minimise their impact on the climate. [Click here](#) to find out more about how HS2 is being built.

Phase One, which starts at London Euston and goes as far as Birmingham, is being built at the moment. [Click here](#) for an interactive map of the planned route.

SCIENCE AT WORK

VELODROME - OLYMPIC PARK, LONDON



Number facts about the velodrome

26 carpenters installed the cycle track

56km of timber and **350,000** nails were used

Cyclists on the track can go as fast as **80km/hr**

There are **6,750** seats for spectators

It cost **£93 million** to build

70% of the water used in the building is from rainwater collected from the roof

[Click here](#) to see more pictures showing the design and build of the velodrome

LONDON BRIDGE STATION



London Bridge station was originally built in 1836. It is one of Britain's busiest railway stations and after its recent redevelopment, it can accommodate double the number of passengers – now 96 million a year! The picture on the left shows the foundations of the new station being built, and the picture on the right is the inside of the finished station. What building materials can you see that the engineers have used? [Click here](#) to watch a video about the challenges of re-building London Bridge station.

Important note: The Primary Science Teaching Trust is not liable for the actions or activity of any person who uses the information in this resource or in any of the suggested further resources. The Primary Science Teaching Trust assumes no liability with regards to injuries or damage to property that may occur as a result of using the information on this sheet.